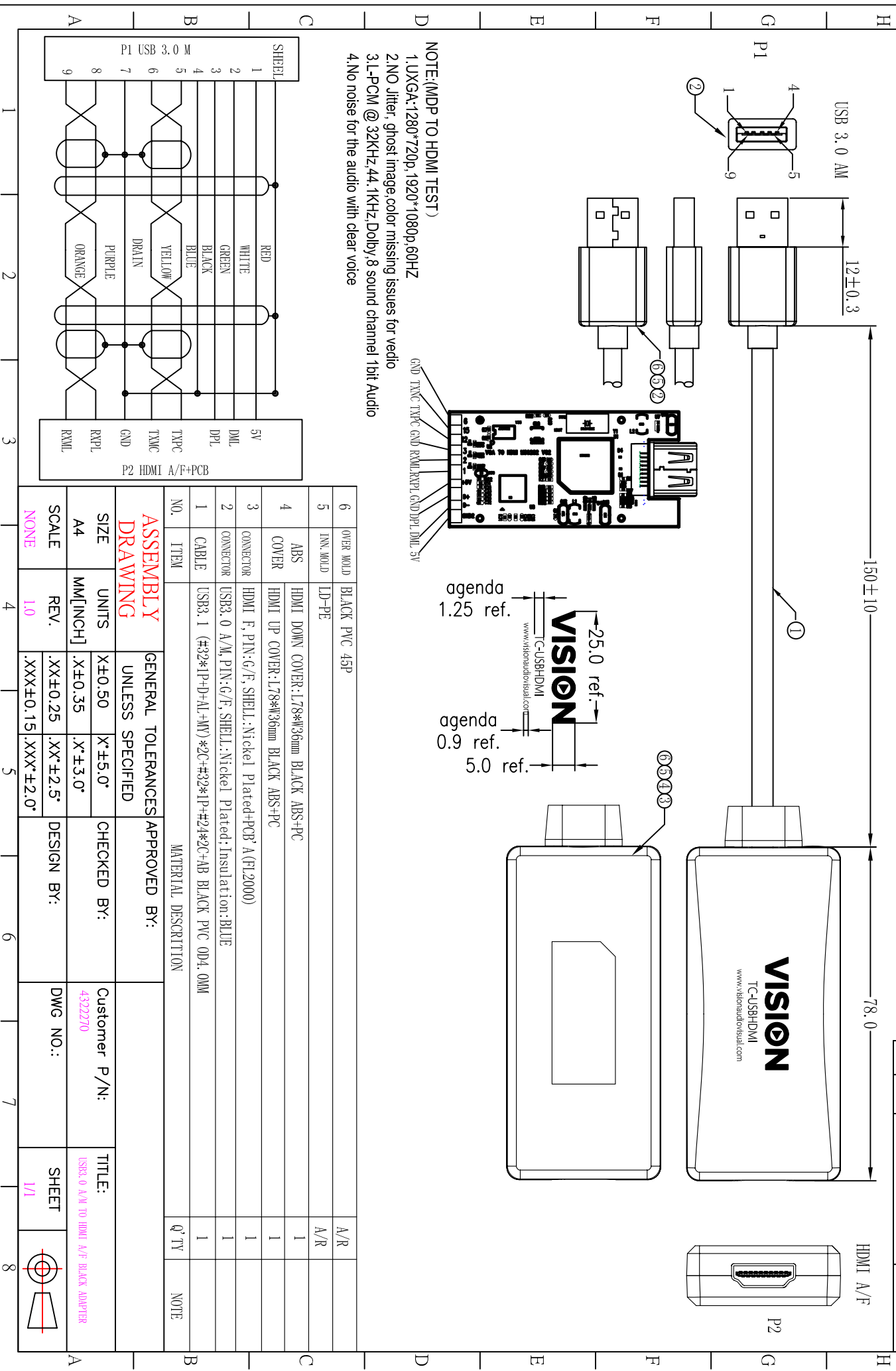


RoHS-COMPLIANT

REV:	LTR	ECN/DESCRIPTION	DATE
1.0		NEW RELEASE	201706/21



NOTE:(MDP TO HDMI TEST)
 1.UXGA:1280*720p,1920*1080p 60HZ
 2.NO Jitter, ghost image,color missing issues for video
 3.L-PCM @ 32KHz,44.1KHz,Dolby 8 sound channel 1bit Audio
 4.No noise for the audio with clear voice

6	OVER MOLD	BLACK PVC 45P						
5	INN.MOLD	LD-PE						
4	ABS COVER	HDMI DOWN COVER:178*W36mm BLACK ABS+PC HDMI UP COVER:178*W36mm BLACK ABS+PC						
3	CONNECTOR	HDMI F, PIN:G/F, SHELL:Nickel Plated+PCB A (PL2000)						
2	CONNECTOR	USB3.0 A/M, PIN:G/F, SHELL:Nickel Plated;Insulation:BLUE						
1	CABLE	USB3.1 (#32*1P+D+AL+MY)*2C+#32*1P+#24*2C+AB BLACK PVC OD4.0MM						

GENERAL TOLERANCES UNLESS SPECIFIED		APPROVED BY:	
SIZE	UNITS	CHECKED BY:	Customer P/N:
A4	MM[INCH]		4322270
SCALE	REV.	DESIGN BY:	DWG NO.:
NONE	1.0		

ASSEMBLY DRAWING		TITLE:	
		USB3.0 A/M TO HDMI A/F BLACK ADAPTER	
MATERIAL DESCRIPTION		SHEET	
		1/1	