

Flat-Panel Wall Arm 100×100

VFM-WA1X1V2 EU SAP: 4506276 US SAP: 13041717

vav.link/vfm-wa1x1v2

Articulated wall mount for flat panels that ranges from 10" to 34"
Cable management and adjustable damper
Premium Aluminium construction



Vision's Vision Flat-Panel Mount – Wall range is tough and flexible. The VFM-WA1X1v2 wall arm fits any flat-panel LCD or LED screen which has 75 x 75mm or 100 x 100mm rear mounting holes – most computer monitors.



SWL 9 kg

Supports monitors up to 9 kg (20 lb). Note: if a larger display has the correct mounting points and weighs less than the SWL this mount can support it safely.

Adjustable Damper

To allow for different loads the dampers can be tightened or loosened to make sure the display stays where it is when you let go of it.

Cable Management

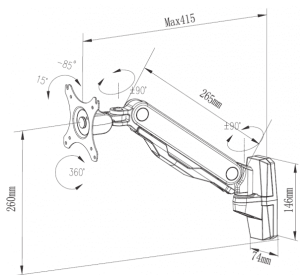
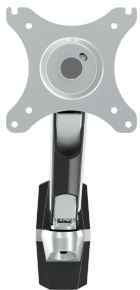
Clip on cover allow tidy cable routing.

Move and Rotate

Almost endless tilt, rotation, swivel, and height adjustment puts the display right where you need it.

Maximum Reach

The distance from the wall to the front of the screen is up to 415mm (16.3").



VISION

MANUAL

Quick manual

EN PDF 1.16 MB

files.visionaudiovisual.com/products/VFM-WA1X1V2/manuals/VFM-WA1X1V2_quick_manual.pdf

IMAGE

Product Images

ZIP 2.70 MB

<files.visionaudiovisual.com/products/VFM-WA1X1V2/images/VFM-WA1X1V2.zip>

High

PNG 815.21 KB

files.visionaudiovisual.com/products/VFM-WA1X1V2/images/VFM-WA1X1v2_high.png

Low

PNG 754.62 KB

files.visionaudiovisual.com/products/VFM-WA1X1V2/images/VFM-WA1X1v2_low.png

Side

PNG 755.38 KB

files.visionaudiovisual.com/products/VFM-WA1X1V2/images/VFM-WA1X1v2_side.png

Front

PNG 545.93 KB

files.visionaudiovisual.com/products/VFM-WA1X1V2/images/VFM-WA1X1v2_front.png

Dims

PNG 34.68 KB

files.visionaudiovisual.com/products/VFM-WA1X1V2/images/VFM-WA1X1v2_dims.png

Menu

PNG 254.30 KB

files.visionaudiovisual.com/products/VFM-WA1X1V2/images/VFM-WA1X1V2_menu.png

SPECIFICATIONS

PRODUCT DIMENSIONS

see image

PACKAGED DIMENSIONS

422 x 326 x 115 mm / 16.6" x 12.8" x 4.5" (length x width x height)

PRODUCT WEIGHT

1.85 kg (4.1 lbs)

PACKAGED WEIGHT

2.61 kg / 5.8 lbs

SAFE WORKING LOAD

9 kg (19.8 lbs)

CONSTRUCTION MATERIAL

Aluminum

COLOUR

Silver

VESA SIZES

100 x 100 mm / 3.9" x 3.9" 75 x 75 mm / 3" x 3"

ACCESSORIES INCLUDED

4 x M4 12mm screw 4 x M5 12mm screw

WARRANTY

Lifetime return-to-base

COMPLIANCES

REACH

ORDER PART CODE

VFM-WA1X1v2 [EU SAP: 4506276 / US SAP: 13041717]