



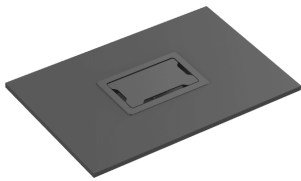
TC3 Table Faceplate

TC3 SURRTB EU SAP: 4875951 US SAP: 13445531

vav.link/tc3_surrb

Fits into table
Chassis and surround included
Accommodates up to 9 modules (not included)
Very high quality fit and finish
Matt black

Part of Vision's Techconnect modular AV faceplate family, this table surround allows seamless AV integration into boardroom and meeting room tables.



Tactile Quality

Lift the lid and feel the weight. Strong, finely finished materials have been selected to make this product.

Slow-Close

Throw the lid closed and a damper slows the lid, closing silently.

9-Module Capacity

Mix and match the modules you need in a future-proof enclosure.

Optional Power Sockets

Choose Vision's Schuko (EU) or 1363 (UK) power socket modules (Part numbers [TC3 PWREU](#) or [TC3 PWRUK](#)). As each of these modules occupies 3 module spaces you can have up to three.

Plug-In or Pull-Up

Choose to use modules you plug into, or use the pull-up module (part number TC3 PULLUP) to pull cables up from under the table.

Plug In And Close

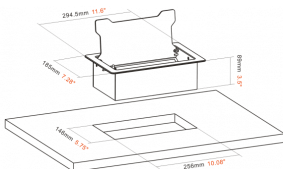
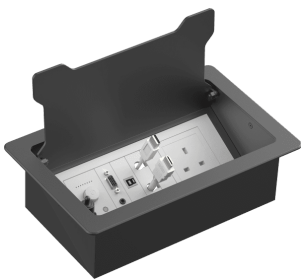
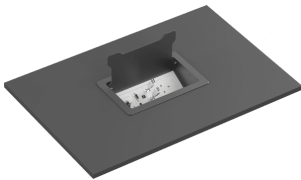
A 15 mm / 0.6" gap around the lid means you can plug-in or pull-up, then close the lid to get back table space for your meeting.

A4

The bezel is very similar in size to an A4 piece of paper - slightly narrower.

Cable Tie Points

Vision takes ease of installation seriously. Installers will enjoy multiple 6 mm / 0.23" fixing holes for securing cables underneath the chassis.



VISION

MANUAL

Quick manual

EN PDF 0.98 MB

files.visionaudiovisual.com/products/TC3_SURRTB/manuals/TC3_SURRTB_quick_manual.pdf

IMAGE

Product Images

ZIP 22.44 MB

files.visionaudiovisual.com/products/TC3_SURRTB/images/TC3_SURRTB.zip

Product Images

PNG 4.36 MB

files.visionaudiovisual.com/products/TC3_SURRTB/images/TC3_SURRTB.png

In table

PNG 5.51 MB

files.visionaudiovisual.com/products/TC3_SURRTB/images/TC3_SURRTB_in_table.png

In table open

PNG 5.79 MB

files.visionaudiovisual.com/products/TC3_SURRTB/images/TC3_SURRTB_in_table_open.png

Exploded

PNG 2.94 MB

files.visionaudiovisual.com/products/TC3_SURRTB/images/TC3_SURRTB_exploded.png

Open 1

PNG 4.01 MB

files.visionaudiovisual.com/products/TC3_SURRTB/images/TC3_SURRTB_open-1.png

Dims

PNG 30.89 KB

files.visionaudiovisual.com/products/TC3_SURRTB/images/TC3_SURRTB_dims.png

Above w surround

PNG 490.88 KB

files.visionaudiovisual.com/products/TC3_SURRTB/images/TC3_SURRTB_above_w_surround.png

Menu

PNG 440.48 KB

files.visionaudiovisual.com/products/TC3_SURRTB/images/TC3_SURRTB_menu.png

SPECIFICATIONS

OVERALL DIMENSIONS

Width: 295 mm / 11.6" Length: 185 mm / 7.3" Depth: 89 mm / 3.5"

CUTOUT DIMENSIONS

Minimum: 255 mm (10.0") x 145 mm (5.7") Overlap: 20 mm (0.8")

COLOUR

Chassis, Lid, and Bezel: Matt Black Surround: White

TECHCONNECT MODULE CAPACITY

9

MATERIAL

Chassis: Steel Lid and Bezel: Cold-rolled Steel Surround: Plastic

PACKAGED WEIGHT

3 kg (6.61 lbs)

PACKAGED DIMENSIONS

320 x 200 x 100 mm / 12.6" x 7.9" x 3.9" (Length x Width x Depth)

PART NUMBER

TC3 SURRTB [EU SAP:4875951 / US SAP: 13445531]