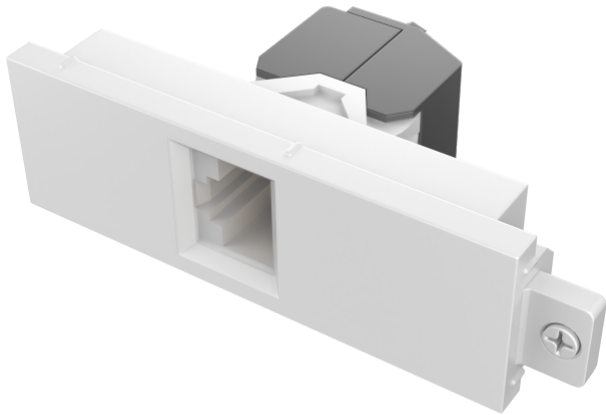


CAT6A compliant
RJ45 socket on front
Bare-wire Punch-down on rear



This module is part of Vision's Techconnect connectivity faceplate family.

Ethernet Socket

Female ethernet socket, which is backwards compatible with RJ11 phone jacks

Fixes to Surround

Techconnect modules fix into a surround, which in turn fixes to a backbox, mudring (for hollow walls), or a table faceplate.

Future-proof

If you break a module or need to change it in the future, just replace that part - not the entire faceplate.

Flexible

Get to site and the client changes what they want on their AV faceplate? No problem.

Strong

Techconnect parts are robust for the rigours of every day use. They include strengthening ribs and reinforcing where required.

Proven

For over 15 years Techconnect has improved and developed into one of the most popular AV faceplates in the world.

System Warranty Compliance

Network hardware manufacturers such as HellermannTyton Data, Ultima, Excel, Brandrex, Nexans, and Commscope issue system warranties. Using a non-compliant link will void the warranty.

Low NEXT

The punch-down connectors keeps Near End Cross Talk (NEXT) noise low on the network.

SPECIFICATIONS

COLOR

White

MATERIAL

ABS Plastic

PRODUCT DIMENSIONS

75 x 20.7 x 38.5 mm / 2.5" x 0.83" x 1.57"

PRODUCT WEIGHT

0.014 kg (0.03 lb)

PACKAGED WEIGHT

0.015 kg (0.03 lb)

PACKAGED DIMENSIONS

160 x 80 x 22 mm / 6.3" x 3.1" x 0.9"

STANDARD

CAT6A

WIRING

T568A/B

CONNECTOR

Gold Plated

