

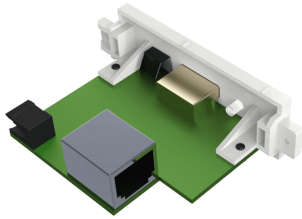
TC3 HDMI-over-CAT6 Module

TC3 HDMITP2 EU SAP: 4274132 US SAP: 13041724

vav.link/tc3_hdmip2

Transmits HDMI signal over CAT (twisted pair) up to 50m (164 ft)
Supports 1080P (1920 x 1080) and 3D (60Hz)
Power adaptor at Transmitter only

Vision's Techconnect HDMITP2 allows HDMI signal to be transmitted long distances over standard unshielded CAT5e and CAT6 cable. Take advantage in buildings which have been flood-wired with network cable.



Seamless

The transmitter simply fits into the Techconnect AV faceplate on the wall, and the receiver plugs into the HDMI port on the display device.

Link light

A link light which comes on and stays on when the transmitter is successfully connected to the receiver. You can easily isolate if issues are with the cable or with EDID.

Auto EQ

If no image shows or the image has artefacts press the inset "Length" button on the receiver to run the auto-EQ. Pressing the button more than twice allows installers to manually step through ten gain steps.

One Power Supply

The single power supply supplied connects to the transmitter, which passes power on to the receiver via the CAT cable. If a very long or poor quality cable is used the receiver can also be powered via a standard Micro-USB connector. Any 5V2A mobile phone charger can be used.

HDCP Support

Version 1.2 of HDCP (High-bandwidth Digital Content Protection) is supported. HDCP authentication is the technology that prevents copying of digital content as it passes through cables.

EDID

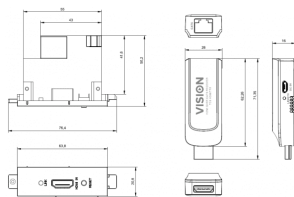
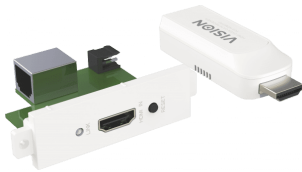
EDID handshakes allow source devices to output the native display resolution. A reset button on the transmitter can be pressed to capture information from the display if the display is changed.

Easier to work with

Ethernet cable is easier to work with than HDMI cables; it has a tighter bend-radius, is thinner, easier to pull, and simple to terminate. And it is future-proof

HD Resolution

This product does not compress and supports resolutions up to 1080P (1920 x 1080) at 60 frames per second. It also supports 3D at 60Hz.



VISION

MANUAL

Manual

EN PDF 1.90 MB

files.visionaudiovisual.com/products/archive/TC3.HDMIIP2/manuals/TC3_HDMIIP2_manual_en.pdf

IMAGE

Product Images

ZIP 18.41 MB

files.visionaudiovisual.com/products/TC3_HDMIIP2/images/TC3_HDMIIP2.zip

Front angle 1

PNG 4.75 MB

files.visionaudiovisual.com/products/TC3_HDMIIP2/images/TC3_HDMIIP2_front_angle-1.png

Rear angle 1

PNG 5.17 MB

files.visionaudiovisual.com/products/TC3_HDMIIP2/images/TC3_HDMIIP2_rear_angle-1.png

Front angle alt 1

PNG 4.16 MB

files.visionaudiovisual.com/products/TC3_HDMIIP2/images/TC3_HDMIIP2_front_angle-alt1.png

Tx front alt 1

PNG 2.71 MB

files.visionaudiovisual.com/products/TC3_HDMIIP2/images/TC3_HDMIIP2_Tx_front-alt1.png

Rx

PNG 1.91 MB

files.visionaudiovisual.com/products/TC3_HDMIIP2/images/TC3_HDMIIP2_rx.png

Dims

PNG 59.48 KB

files.visionaudiovisual.com/products/TC3_HDMIIP2/images/TC3_HDMIIP2_dims.png

SPECIFICATIONS

TRANSMITTER DIMENSIONS

76 x 21 x 50 mm / 2.9" x 0.8" x 2.0" (length x width x height)

RECEIVER DIMENSIONS

71 x 26 x 16 mm / 2.8" x 1.0" x 0.6" (length x width x height)

PACKAGED DIMENSIONS

150 x 117 x 77 mm / 5.9" x 4.6" x 3.0"

PRODUCT WEIGHT

25 g / 0.06 lb per set

PACKAGED WEIGHT

0.27 kg / 0.6 lb per set

CAT5E RECOMMENDED MAXIMUM CABLE LENGTH

1280 x 1024: 50m / 1600 x 1200: 40m / 1920 x 1080: 30m

CAT6/7 RECOMMENDED MAXIMUM CABLE LENGTH

1280 x 1024: 60m / 1600 x 1200: 55m / 1920 x 1080 (@ 60Hz): 50m

CONSTRUCTION MATERIAL

Plastic

COLOUR

White

VIDEO AMPLIFIER BANDWIDTH

6.75Gbps (2.25Gbps/TDMS Channel)

INPUT VIDEO SIGNAL

0.5-1.5 volts p-p

INPUT DDC SIGNAL

5 volts p-p (TTL)

MAXIMUM VIDEO FORMAT SUPPORTED

1920x1080 / 1080P

OUTPUT VIDEO

HDMI 1.3, 3D @ 60Hz

OPERATING TEMPERATURE RANGE

-15 to +70°C

OPERATING HUMIDITY RANGE

5 to 90 % RH (no condensation)

MAXIMUM OPERATION CURRENT

500mA

POWER SUPPLY

100-240v 50/60Hz AC 5 volt / 2 amp

TRANSFORMER INTEGRATED INTO PLUG

INCLUDES INTERCHANGEABLE PLUGS

UK/EU/US/AU

DC TAIL LENGTH

1.8 m / 5.9 ft

TRANSFORMER DIMENSIONS

66 x 43 x 32mm / 2.6" x 1.7" x 1.3"

WARRANTY

Lifetime return-to-base

COMPLIANCES

RoHS, WEEE, CE/ EMC, and FCC compliant

SPARE POWER SUPPLY UNIT (PSU)

TC2 P5V2A [EU SAP: 2940996/ US SAP: 13445529]

VISION