



# VISION

## A new era for Education

Mounts, Connectivity and Audio Solutions



# Contents

---

<b>01.</b>	<b>Why Vision?</b>	<b>4</b>
<b>02.</b>	<b>Education Solutions</b>	<b>6</b>
	Example School Layout	7
	Floor Stands	8
	Monitor Mounts	11
	Projector Mounts	14
	Large Display Mounts	16
	Audio	18
	Faceplates	21
	Faceplate Configurator	25
<b>03.</b>	<b>Lifetime Warranty</b>	<b>25</b>
	<b>Sustainability</b>	<b>27</b>
	<b>Contact Us</b>	<b>29</b>

---

# 01. Why Vision?

Solutions you can rely on. Vision is dedicated to designing and manufacturing excellent AV installation accessories. Our goal is to offer reliable, competitively priced products which are exceptionally easy to install.

Our installation products include wall mounted, free-standing and mobile mounts, connectivity solutions, and audio. The essential bits that complete your smart solutions for workspaces in the office and home.

Our specialist engineering team, commitment to high build quality, vigorous quality assurance, high stock availability, and partnership approach makes Vision a brand you can rely on to deliver for you and your customers, wherever in the world they are based.

## Designed for installers

- Every aspect of our design is thoughtful, purposeful and future proofed.
- At Vision, we understand that Installers only have two hands so we make sure you don't have to be an octopus to install our products.
- Our product development team are always pushing technical limits to offer integrators products that simplify solutions.

## Great availability

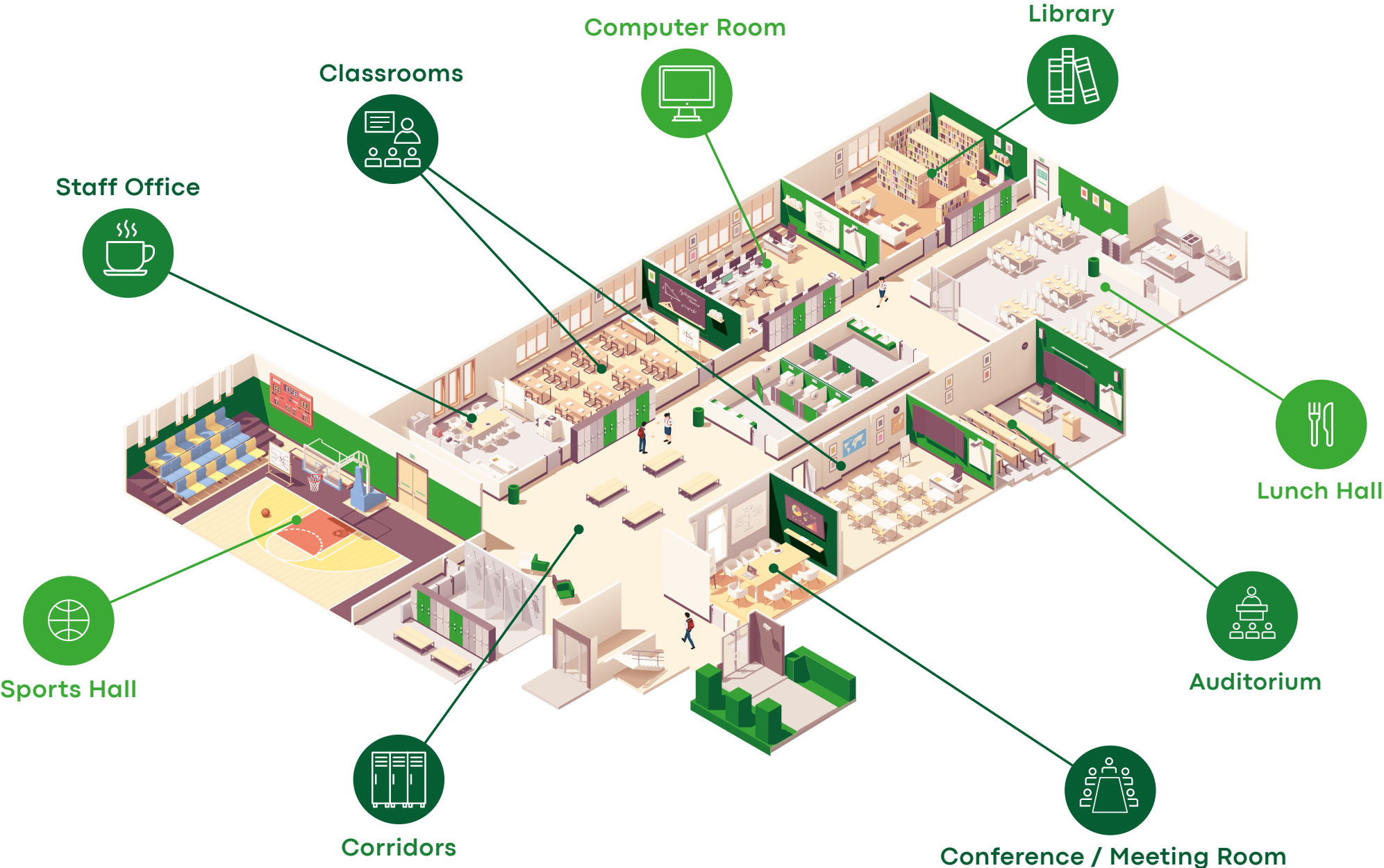
- We try really hard to always have what you need in stock, and we measure our success. 95% of the time we have what you order.
- We have warehouses across Europe, offering next day delivery.

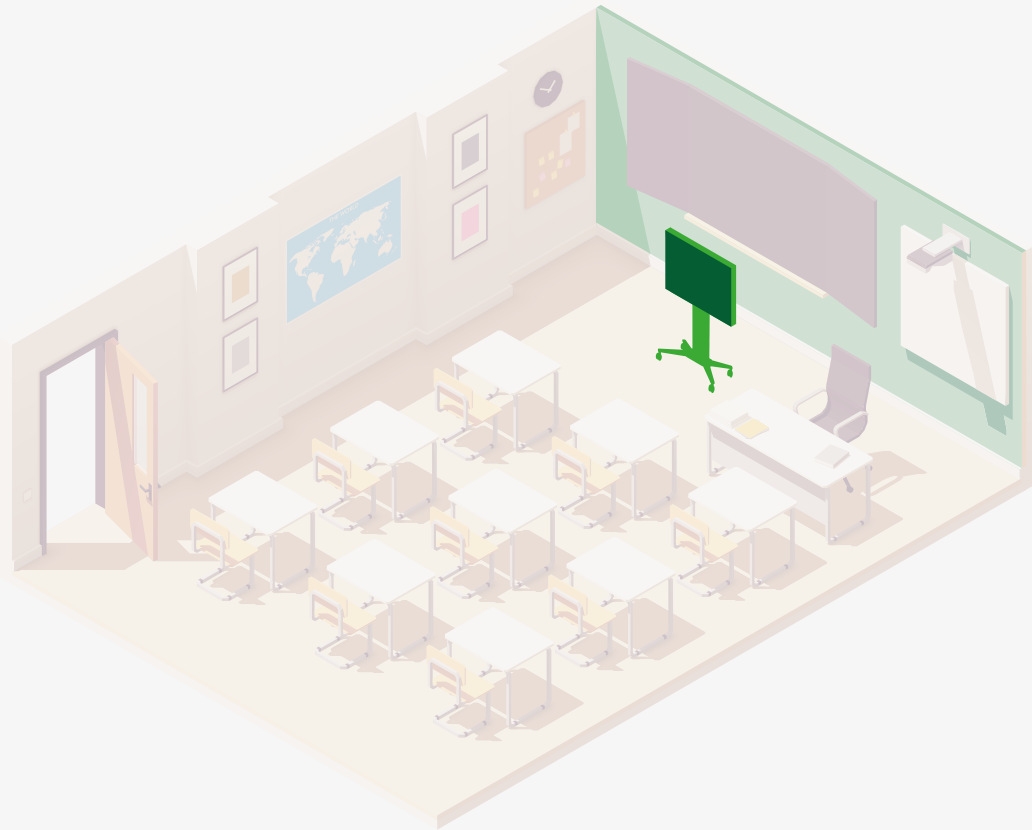
## Outstanding Customer Care

- Our personal sales team will be there for you throughout the specification, installation and maintenance process. No AI here.
- Our specialist technical staff know the products we sell, and know the challenges installers face.

# 02. Education Solutions

# Example School Layout





## Floor Stands

Vision's collection of height-adjustable floor stands offer a flexible mounting solution that can be easily adjusted to the perfect viewing angle for the learner's in the classroom.

The floor stands are easily assembled and can be used mobile, free standing or wall-mounted, depending on the model. They have been manufactured with stability and versatility in mind, and are a best seller in the corporate and education sectors.



## Height - Adjustable Display Cart 80kg - VFM-F25



Vision's Flat-Panel Mount (VFM) Carts are constructed from commercial-grade heavy-duty steel. They are easy for one person to move, and feature a hand crank to adjust height once the display is in position. These attractive floorstands are perfect for AV rental, event centers, healthcare, schools, or any application where large format displays are shared between meeting areas. Crank the handle at the back of the column to adjust the display height by 400 mm (16"). Gearing makes it easy to turn.

Suitable for: **Classrooms, Computer room**

## Motorised Height - Adjustable Display Cart 80kg - VFM-F25M



Vision's Flat-Panel Mount (VFM) Carts are constructed from commercial-grade heavy-duty steel. They are easy for one person to move, and feature a motorised height adjustment. These attractive floor stands are perfect for AV rental, event centers, healthcare, schools, or any application where large format displays are shared between meeting areas.

Suitable for: **Classrooms, Computer room**

## Motorised Flat Panel Floor Stand VFM-F50



How much do you trust the wall to safely support your expensive and heavy interactive flat panel? Vision's F50 floor stand takes away those worries because it transfers the weight to the ground to make installation easier and safer.

The F50 has motorised height adjustment so with a one-button press, you can raise it to so even distant audience members can see the presentation clearly over the heads of the audience, or lower it so young children can engage with it in a learning setting.

Suitable for: **Classrooms, Computer room, Conference / Meeting Room**

- Portable floorstand for displays up to 80 kg (176 lb)
- Fits displays with VESA sizes up to 1000 x 600 mm
- For 60-100 Displays (subject to VESA pattern and weight limit)
- Height adjustable by crank hand
- Large 4 wheels
- Shelves included

- Portable floorstand for displays up to 80 kg (176 lb)
- Fits displays with VESA sizes up to 800 x 600 mm
- For 47-100 Displays (subject to VESA pattern and weight limit)
- Motorised height adjustment
- Large 4 wheels
- Shelves included

- Heavy-duty floor stand
- Fixes to wall, transfers load to floor
- For flat panels up to 100" 800 mm (31.5") height adjustment, motorised
- Control by wired controller or RS-232

## Flat Panel Trolley - VFM-F50T



Need a way of safely supporting and moving your expensive and heavy interactive flat panel? Vision's F50T mobile cart is stable, strong, and easy to roll smoothly.

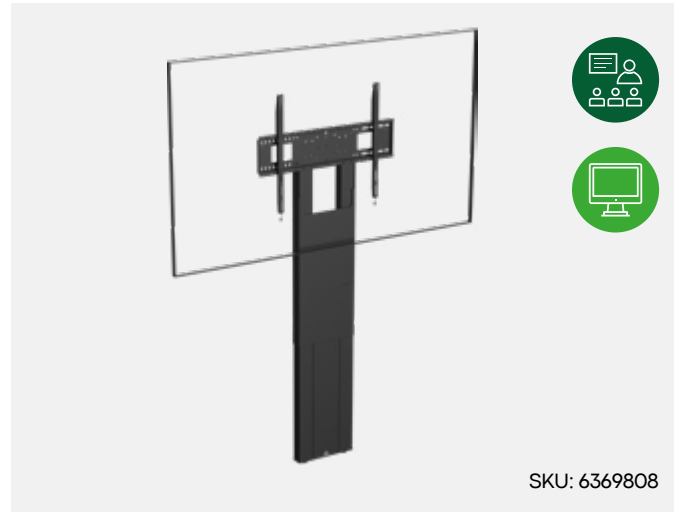
The F50T can also convert into a free-standing non-portable floor stand suited to temporary or rental AV installations.

Featuring a motorised height adjustment so with a one-button press, you can raise it to so even distant audience members can see the presentation clearly over the heads of the audience, or lower it so young children can engage with it in a learning setting.

**Suitable for:** [Conference / Meeting Room](#)

- Portable heavy-duty mobile cart
- For flat panels up to 100"
- 800 mm (31.5 ) height adjustment, motorised
- Control by wired controller or RS-232
- Angle brackets for optional kiosk-style installation
- Removable wheels for non-portable variation
- Removable rear legs to lean against walls

## Flat Panel Floor Stand - VFM-F51



How much do you trust the wall to safely support your expensive and heavy interactive flat panel? Vision's F51 floor stand takes away those worries because it transfers the weight to the ground to make installation easier and safer.

The F51 has manual height adjustment, so you can raise it to so even distant audience members can see the presentation clearly over the heads of the audience, or lower it so young children can engage with it in a learning setting.

**Suitable for:** [Classrooms](#), [Computer room](#)

- Heavy-duty floor stand
- Fixes to wall, transfers load to floor
- Supports up to 95 kg (209 lb)
- 800mm / 31.5" height adjustment, non-motorised
- [Note: once installed the height cannot be adjusted]

## Flat Panel Trolley - VFM-F51T



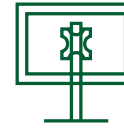
Vision's F51T mobile cart is stable, strong, and easy to roll smoothly.

The F51T can also convert into a free-standing non-portable floor stand suited to temporary or rental AV installations.

Featuring manual height adjustment, so you can raise it to so even distant audience members can see the presentation clearly over the heads of the audience, or lower it so young children can engage with it in a learning setting.

**Suitable for:** [Classrooms](#), [Computer room](#)

- Portable heavy-duty mobile cart
- For large-format flat panels 47-100"
- 800mm / 31.5" height adjustment, non-motorised
- [Note: once installed the height cannot be adjusted]
- Angle brackets for optional kiosk-style installation
- Removable wheels for non-portable variation
- Removable rear legs to lean against walls



## Monitor Mounts

Vision's collection of single and dual-display monitor mounts can aid educators in the classroom and are also ideal for those teaching / learning from home. By mounting monitors desk spaces become less cluttered and provide both learners and educators the freedom of adjusting the monitor to the preferred viewing distance and angle.

The flexibility of these solutions can increase user comfort especially in classrooms where ambient light causes glare on monitors.

## Black Monitor Desk Arm 100x100 - VFM-DA/4



Vision's VFM-DA/4 Desk Arm ensures any workspace can enjoy both a clear-desk aesthetic and ergonomic working conditions without compromise. It raises the monitor off the desk surface or it can convert to a laptop or tablet shelf supporting clutter-free working and smaller desk areas.

Suitable for: [Staff Office](#), [Library](#)

## Black Monitor Desk Arm 100x100 Dual - VFM-DAD/4



Vision's VFM-DAD/4 Dual Desk Arm ensure any workspace can enjoy both a clear-desk aesthetic and ergonomic working conditions without compromise. It raises the monitors off the desk surface, or one arm can convert to a laptop or tablet shelf supporting clutter-free working and smaller desk areas.

Suitable for: [Staff Office](#)

## Monitor Desk Stand 100x100 VFM-DSB



The VFM-DS (Vision Flat-panel Mount – Desk Stand) takes the popular desk post mount and replaces the clamp with an attractive flat base. It fits any monitor which has 75 x 75 mm or 100 x 100 mm rear mounting holes. Vision have obsessed over the detail to make it as quick and easy to setup.

Suitable for: [Staff Office](#), [Library](#), [Computer room](#)

- Double-articulated desk mount for flat panels up to 27"
- Converts to laptop or tablet shelf
- VESA plate cover included
- Cable management
- Comes with clamp and grommet fixing options

- Double-articulated desk mount for displays up to 32"
- Popular post-style in Black
- Parts included for grommet or clamp fixing to desk
- Optional Laptop Shelf
- Quick release VESA plate
- Thumbscrews for fast assembly

- Freestanding desk stand for displays up to 32"
- Black (only)
- Full adjustment: height, rotation, swivel
- Quick release VESA plate
- Thumbscrews for fast assembly

## Monitor Desk Stand 100x100 Dual- VFM-DSDB

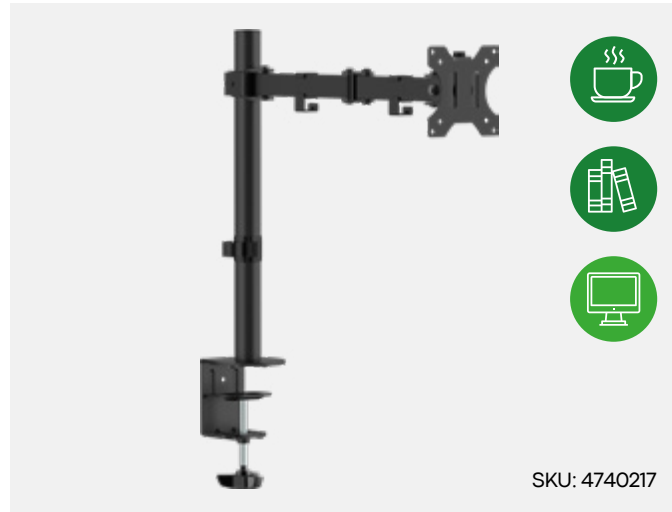


SKU: 4740212

The VFM-DSD (Vision Flat-panel Mount – Desk Stand Dual) takes the popular desk post mount and replaces the clamp with an attractive flat base. It fits any two monitors which have 75 x 75 mm or 100 x 100 mm rear mounting holes. Vision have obsessed over the detail to make it as quick and easy to set up.

Suitable for: **Staff Office**

## Black Monitor Desk Post 100x100- VFM-DP2B



SKU: 4740217

The VFM-DP2 (Vision Flat-panel Mount – Desk Post) offers a massive range of movement and fits any monitor which has 75 x 75 mm or 100 x 100 mm rear mounting holes. Vision have obsessed over the detail to make it as quick and easy to install.

Suitable for: **Staff Office, Library, Computer room**

## Black Monitor Desk Post 100x100 Dual- VFM-DPD2B



SKU: 4740219

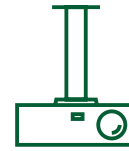
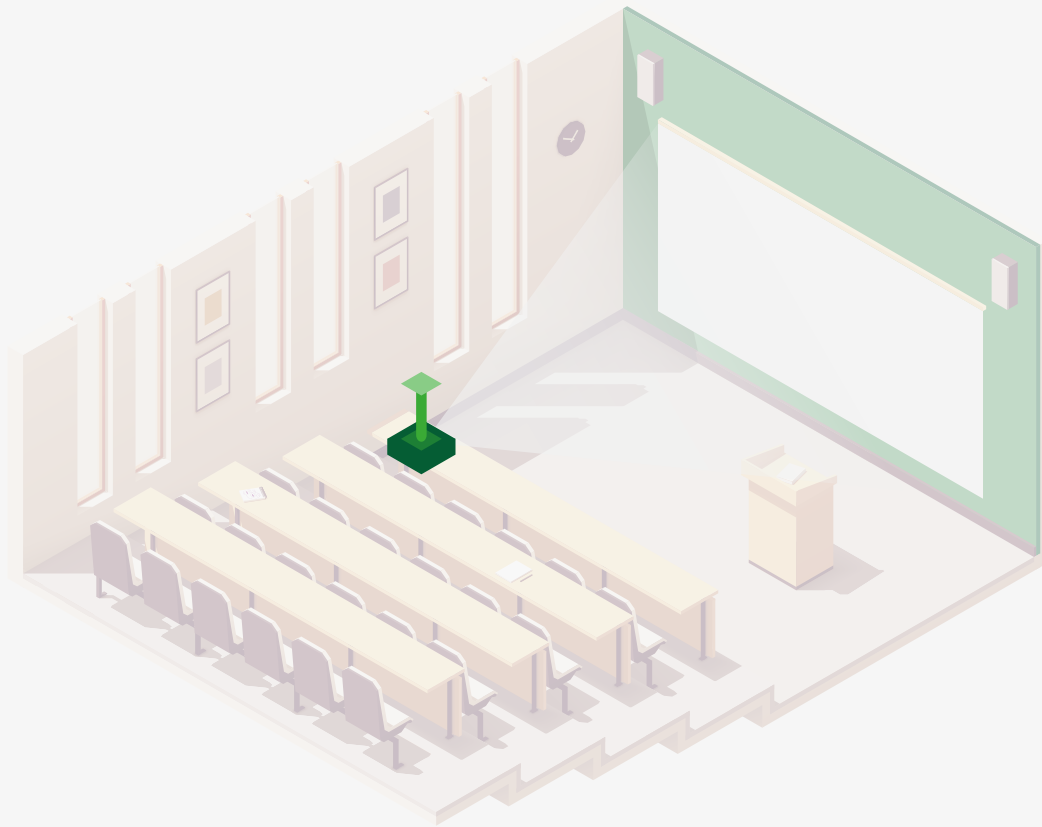
The VFM-DPD2 (Vision Flat-panel Mount – Desk Post Dual) offers a massive range of movement and fits any monitors which have 75 x 75 mm or 100 x 100 mm rear mounting holes. Vision have obsessed over the detail to make it as quick and easy to install.

Suitable for: **Staff Office**

- Freestanding desk stand for two displays up to 32
- Black (only)
- Full adjustment: height, rotation, swivel
- Quick release VESA plate
- Thumbscrews for fast assembly
- Fine independent height adjustment

- Double-articulated desk mount for displays up to 32
- Popular post-style in Black
- Parts included for grommet or clamp fixing to desk
- Optional Laptop Shelf
- Quick release VESA plate
- Thumbscrews for fast assembly

- Double-articulated dual desk mount for displays up to 27
- Popular post-style in Black
- Parts included for grommet or clamp fixing to desk
- Optional Laptop Shelf
- Quick release VESA plate
- Thumbscrews for fast assembly
- Fine independent height adjustment



## Projector Mounts

By mounting classroom projectors, learners can benefit from a perfect viewing position free from shadow interference, placing the projected image at a level that is comfortable for all eyes in the room.

Vision projector mounts, can be placed much closer to the screen than a table, ensuring that viewers enjoy the optimal brightness of the device.

## Universal Projector Ceiling Mount TM-1200



The Techmount is a universal projector ceiling bracket designed to secure 99% of data projectors safely and sturdily to ceilings. It has built-in flexibility allowing quick assembly in a number of different configurations, including "flush-mount" where the projector is as close to the ceiling as possible.

The fixed pole has greater rigidity than telescopic mounts and because it is cut to length onsite it has an infinitely variable length. The overall length when the tilting mechanism is in place is 1420mm. A 1m male-to-female extension pole is available which can be daisy-chained.

Suitable for: **Sports Hall, Auditorium, Library**

- Projector ceiling mount with 1.1m pole cut to length onsite (overall length 1420mm / 55.9 )
- All parts included e.g drilling jig, cathedral ceiling mechanism, trim disc etc.
- Cables can be routed after assembly

## Telescopic Projector Ceiling Mount TM-TELE



The TM-TELE Techmount is a projector ceiling bracket for anchoring any data projector safely to a ceiling. The telescopic design allows fast deployment and adjustment without the need to cut and drill the pole. It has a greater range than most other telescopic mounts and the pole can be removed for "flush-mounting" the projector as close to the ceiling as possible. Note: unlike the TM-1200 the length of this bracket cannot be extended.

Suitable for: **Classrooms, Sports Hall, Auditorium**

- Universal projector ceiling mount with telescopic pole
- Overall length 440-735 mm (17.32 – 28.94 )
- Full adjustment: tilt at top for sloping ceilings / pitch and roll at the bottom

## Telescopic Webcam Ceiling Mount TM-WEBCAM



The TM-WEBCAM is a universal webcam ceiling bracket for mounting a USB camera safely to a ceiling. The telescopic design allows fast deployment and adjustment. It has a greater range than most other telescopic mounts.

There is a growing demand to mount USB cameras in the ceiling for meeting applications. For example Microsoft Whiteboard uses a ceiling-mounted camera to digitize writing on a physical whiteboard for collaboration.

Suitable for: **Classrooms**

- Standard tripod mount screw fits any webcam
- Fits Logitech Brio webcam for Microsoft Whiteboard
- Fits Huddly cameras
- Can fix to wall as boom
- Overall length 440-735 mm (17.3 – 28.9 )
- Pole can be removed to mount as close as possible to ceiling
- Fits Logitech MeetUp
- Fits Logitech Rally camera



## Large Display Mounts

The biggest advantage of wall mounting displays in educational environments, is the floor space it saves in smaller rooms. This is more aesthetically pleasing, since it allows for a more minimalist look and enables the room to have a larger display with less obstruction to room flow.

Depending on the model, users will also benefit from the extending arm that allows users to set the distance of the display from the wall. When needed, it can also be used to gain access to ports at the back of the display.



## Heavy Duty Flat-Panel Wall Mount 800x600 - VFM-W8X6



SKU: 4934295

Vision's Vision Flat-panel Mount - Wall range is designed by Vision's engineering team for professional AV installers. This mount is no-compromise: very strong, fast to install, highly adjustable, everything included. The VFM-W8X6 fits any flat-panel LCD or LED screen which has rear mounting holes up to 800 wide x 600 mm tall apart.

Suitable for: **Sports Hall, Auditorium, Library**

## Black Flat-Panel Wall Arm 600x400 VFM-WA6X4/3



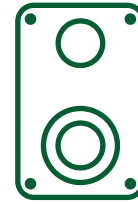
SKU: 6622967

Vision's Vision Flat-Panel Mount - Wall Arm range is tough and flexible. The VFM-WA6X4/3 fits any flat-panel LCD or LED screen which has rear mounting holes up to 600 x 400 mm apart.

Suitable for: **Library, Lunch Hall**

- Non-tilting Wall Mount for large-format flat panels 47-100"
- (subject to VESA pattern and weight limit)
- Mounting points up to 800 (wide) x 600 mm (tall) apart
- Heavy duty 130 kg / 287 lb SWL
- Display latches in place
- Optional camera shelf

- Double-articulated wall mount for flat panels that ranges from 42" to 70"
- Sturdy 3 mm thick rolled steel
- Reaches 69-615 mm (2.7"-24")
- SWL 30 kg/ 66 lbs



## Audio

Good clear quality audio is essential for effective communication but it can quickly become a complex and expensive goal to achieve in larger spaces such as auditoriums, lecture theatres and school halls.

At Vision, we also provide high fidelity audio solutions at competitive prices,. With a number of different configurations as well as amps and controllers, Vision is sure to find a solution that that perfectly fit your customers' desired business outcomes.

## Pair 54w Active Loudspeakers SP-900P



The SP-900P are Vision's most cost-effective audio solution. They are purpose-built for small spaces and classrooms. Incredible value for money; they offer great sound quality and Vision's trademark ease of installation.

**Suitable for:** Classrooms

## Pair 60w Active Loudspeakers SP-1900P



Vision's professional 5.25" powered bookshelf speakers are purpose-built for any audio-visual presentation environments such as classrooms and meeting rooms. They are simple to install and control. Perfect for meeting rooms, classrooms, staff rooms and libraries.

**Suitable for:** Corridors, Lunch Hall, Conference / Meeting Room

- Built-in 2 x 27 watt digital amplifier
- Two summed inputs (1 x Minijack / 1 x 2-Phono)
- Internal Power Supply
- Adjustable wall brackets included

- Built-in 2 x 30 watts amplifier
- Line-level input via 2-phono (RCA)
- Bluetooth 5.0 (can be disabled)
- RS-232 Control
- Tone control (via RS-232)

## Pair 3-Way Wall Loudspeakers SP-1800



SKU: 3635038

Vision SP-1800 professional wall mounted loudspeakers are super-easy to install, look beautiful, and produce rich and powerful sound. They are 240mm tall and use a 5.25 inch woofer – the most popular size for classroom, meeting room, and boardroom applications.

**Suitable for:** Sports Hall, Auditorium

## 2 x 50w Mixer Amplifier- AV-1900



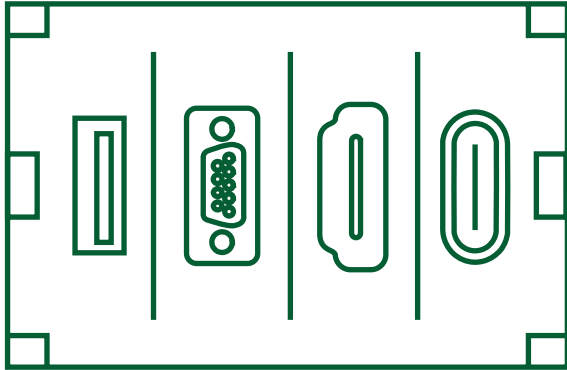
SKU: 5557274

The AV-1900 is a highly capable mixer-amplifier packed with useful features to make it as easy as possible to operate. It is designed for use in demanding applications like meeting spaces, small auditoriums, lecture theatres, school halls, libraries and classrooms. It has professional audio features normally only found in much more expensive mixer amps.

**Suitable for:** Sports Hall, Auditorium

- 5.25 Woofer 50w loudspeakers
- White, sold in pairs
- Wall brackets included with 60° range of tilt adjustment

- 2 x 50w RMS (at 8 ohms) low impedance digital power amplifier
- Input 1: Line-level Stereo (2-Phono/RCA) or Mic (XLR)
- Input 2: Line-level Stereo (2-Phono/RCA) or Mic (Phoenix)
- Input 3: Bluetooth or Mic (Phoenix)
- Input 4: Line-level Stereo (Minijack) or Mic (Phoenix)
- 1 x Line-level Pre-Output
- Balanced Mic inputs with Phantom Power
- RS-232 control



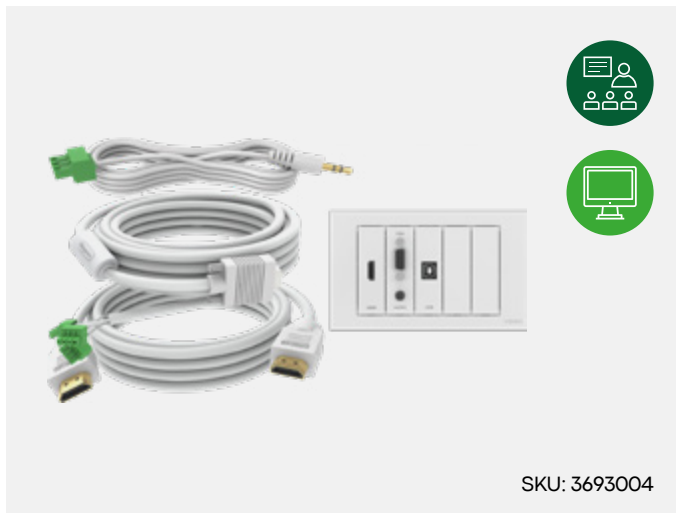
## Faceplates

### Part of the Techconnect 3 system

Techconnect is a modular audio-visual faceplate family engineered especially for AV installers. A “surround” which comes in two parts fits to a backbox (or “mudring” if your wall is hollow), then the modules fix in place to complete the installation.

Techconnect is based around standard UK back box sizes, but Vision also offers mounting hardware for other countries.

## TC3 front plate and cable set 5m (16 ft)



A "surround" fits to a backbox (or "mudring" if your wall is hollow), then the modules fix in place to complete the installation. Techconnect is based around standard UK back box sizes, and Vision also offers mounting hardware for other countries.

For 99% of professional AV installations the same set of modules are required, so Vision offer a simple package that contains a basic selection of modules as a starting point. Just select the length of the cable package you need to go with it.

Suitable for: **Classrooms, Computer Room**

### Mounting Hardware Included:

- 1 x TC3 BACKBOX2G 2-Gang Backbox
- 1 x TC3 SURR2G 1-Gang Surround

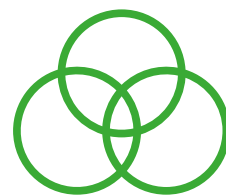
### Modules Included

- 1 x TC3 VGF3.5MM VGA and Minijack

- 1 x TC3 HDMI
- 1 x TC3 USBB

### Cables Included:

- 1 x TC2 5M VGA
- 1 x TC2 5M HDMI
- 1 x TC2 5M3.5MM Minijack



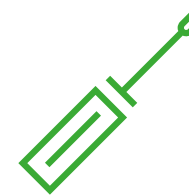
### Matt White

Pure white with a chiselled profile, Techconnect3 also has 11 mm of flat space above and below the connectors for information or company branding stickers.



### Stronger

Techconnect3 has shorter modules and extra ribbing to reduce module flex. On parts where flex is desirable to avoid shattering ABS plastic is used.



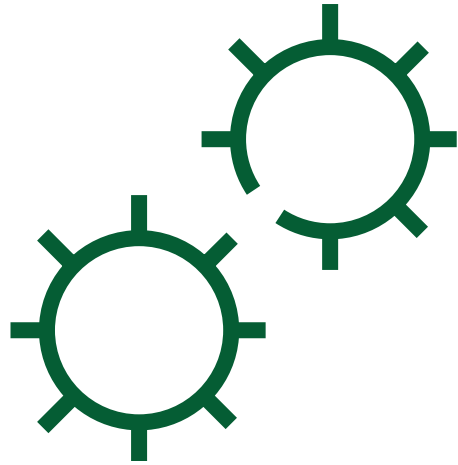
### Screw-In Modules

The modules have a tab that hooks into the surround at the bottom, then a couple of turns of the pre-installed screws locks the modules into place.



### Improved Fit and Finish

Techconnect3 has more space behind the modules stash cables, and narrower and more even gaps between modules.



## Faceplate Configurator

Build your own faceplate using our Techconnect Faceplate Configurator. **Fully Customisable**

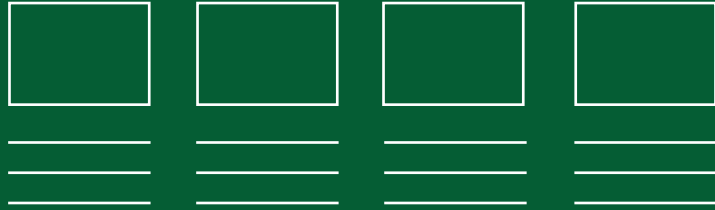
Techconnect is a modular audio-visual faceplate family engineered especially for AV installers. A “surround” which comes in two parts fits to a backbox (or “mudring” if your wall is hollow), then the modules fix in place to complete the installation.

Techconnect is based around standard UK back box sizes, but Vision also offers mounting hardware for other countries.

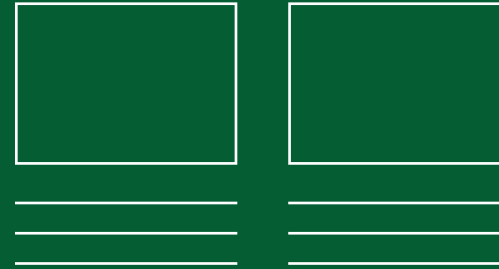
Select the products and parts you need to see a visual representation of your end product.

[vav.link/fc](http://vav.link/fc)

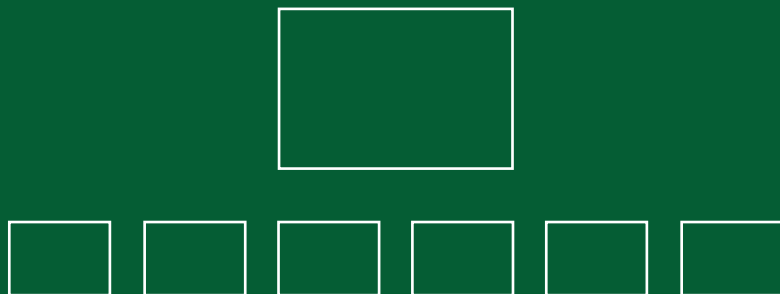
### 1 Choose surround



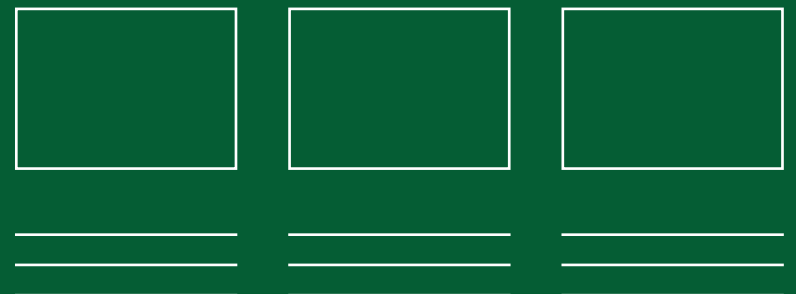
### 2 Select mounting box



### 3 Select modules



### 4 Shopping list





# 03. Lifetime Warranty



Lifetime  
warranty

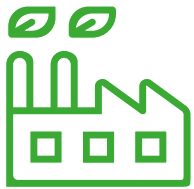
## Quality that exceeds industry standards.

Teachers, students and parents demand higher quality and greater reliability, which is why Vision has benchmarked itself against some of the world's largest electronics manufacturers and has a world-class record.

## Leading by Example

We're so confident in our product that all Vision products have a lifetime warranty. Over 300,000 collaborative spaces around the world use and trust Vision's products and solutions. Vision is setting precedent, we have an incredibly low failure rate at 0.3%

# Sustainability



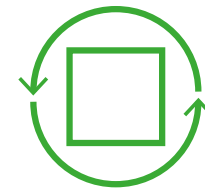
## Net-Zero

Vision has committed to the science-based Target initiative Business Ambition Pledge, and as part of this, plans to achieve net-zero greenhouse gas emissions in its global operations by 2045.



## Packaging

We're really focused on reducing plastic and hard-to-recycle waste. Therefore we have reduced packaging weight per shipment and ensured packing is compact as possible to reduce the carbon footprint.



## Logistics

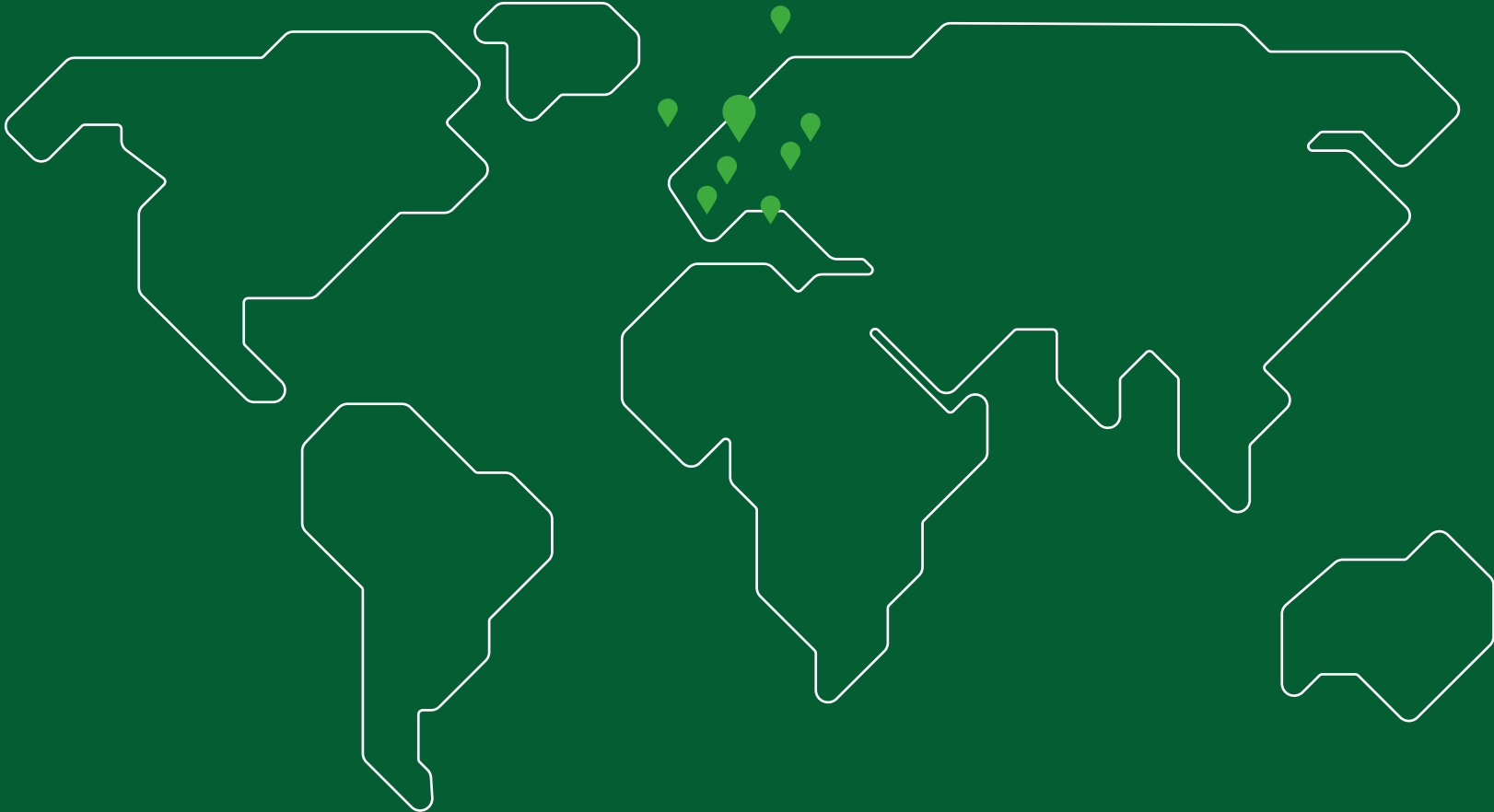
By having several regional stock warehouses, we are able to stock inventory close to our customers, ensuring we are able to provide fast delivery whilst also cutting down on our freighting while helping the environment.

# Vision Master Warehouse Locations

*We obsess over the detail, so if you spot a way we can make a product better please let us know.*

*This will go to a real person and you'll get an immediate reply.*

**Stuart Lockhart, Managing Director**



# Contact Us

We look forward to hearing from you!

Contact us at: [sales@visionaudiovisual.com](mailto:sales@visionaudiovisual.com) or get in touch with your local distributor. Follows us on social media:

 @vision\_av

 Vision Audio Visual

 @VisionAV

